

# Data-driven supports for Title I schools

Dr. Aaron Wilson & Dr. Joan Bramble  
Granite School District  
March 17, 2021

# Background

- Number of Title I schools
- How Title I principals are supported
- Principal coaching philosophy
- Monthly Title I trainings
- GSD's Department of Organizational Effectiveness

***Vision Statement:*** Helping schools and departments in Granite School District achieve organizational effectiveness through building:

- Competencies in data visualization and purposeful data use,
- A shared understanding of effective, fiscally-responsible evidence-based practices, and
- A culture of engaging in meaningful, data-driven continual improvement cycles.

# Fall In-Person School Visit

## Components:

- Compliance
  - Verify Highly Qualified requirements for all employees
  - Stakeholder input and annual school Title I parent meeting
  - Parents' Rights to Know
  - Time and Effort Reporting
- Financial: Verify staff paid out of Title I
- How will the principal collect data to monitor their plan?
- Inventory: Title I inventory check-in, spending reminders
- Sanctioned status review: TSI groups, upcoming CSI 90-day action plan, etc.
- School tour: Seeing their Title I plan in action

# Mid-Year Goal Check-in, Data Review, & Budget Meeting

## Components:

- Reflection on progress of Title I goals
- A mid-year data portfolio based on school goals
- Strategy inventory
- Budget Meeting
  - How have expenditures aligned with goals and closed achievement gaps?
  - Balance of Title I, TSSA, LAND Trust, and other funding sources
  - Plan to meaningfully spend remaining balance
  - Remaining Parent Engagement funds and ideas to build parents' capacity
- Other school-specific agenda items
  - CSI alert status, TSI check-in, etc.

# Spring Supports

## **With each principal:**

- Review the draft of next year's Title I plan with the principal
- (As needed) Help write goals and identify effective strategies
- Assist with budgeting for the following school year
- (If applicable) Assist transitioning of Title I principals in schools

# Summer Workshops

- Title I overview
  - Inspiration of Title I schools, statutory purpose, using evidence-based practices
  - Supports for Title I principals, timeline of requirements
  - Compliance (HQ status, Time and Effort, etc.)
  - Parent engagement requirements, annual Title I meeting, notifications, etc.
  - DMI cycle requirements
  - Title I reimbursements, three prongs, allowable expenses by category
- Meaningful Parent Engagement
- Working with At-Risk Populations
- Effective Instructional Coaching Cycles
- Building Data Literacy
- Finding Balance and Managing your Time
- Budgeting Workshop

# GSD Monthly Title I principal meetings

## September

- Set vision and culture of collaboration
- **Celebrated 19-20 WIDA growth**
- Brainstormed how we can meaningfully engage parents in this unusual year
- Charted path towards compliance (School's Annual Title I meeting, Parents' Right to

Know, Federal Time & Effort Reporting, DMI, sending notices if a CSI/TSI school)

- Reviewed McKinney Vento requirements and supports

## December

- Outline our year, introduction of guests
- Additional WIDA Access test supports
- **School grade calculations, data competencies, identifying bottom 25%**
- RISE Benchmarks & Interim Assessment

- "All means all," what high-MGP teachers do
- Distance learning challenges and share-out
- What schools can do now to prepare their students for the RISE assessment
- Leadership resources for principals

## October

- Shout-outs: Selecting Tier 1 strategies school-wide to address needs of ML students, distance learning successes, and integrated coaching cycles.
- Pandemic resources
- Promoting F/R lunch forms
- TSI designation and exit criteria
- Parent engagement follow-up

- Outreach workers & liaisons
- Allowable Title I expenses
- **Supports from Student Assessment department**
- Collective Efficacy resources

## February

- **Schools' percent of total accountability points for EDA & ELL students**
- "The how of school improvement"
- **Data supports: A closer look at TSI scores**
- Principal share-out: distributed leadership

- Principal share out: instructional audits
- Principal share-out: Using WIDA growth sheets in individual student goal meetings.
- Teacher recruitment and retention
- Marketing your school

## November

- Shout-out: integrating school efforts with parent engagement initiatives
- **Explanation of WIDA scoring and intro to WIDA growth targets**
- Celebrate Exemplary & Blue Ribbon schools
- Ed Equity presentation of "What is

WIDA testing?"

- Planning to meet the needs of identified TSI groups
- Set up mid-year visits

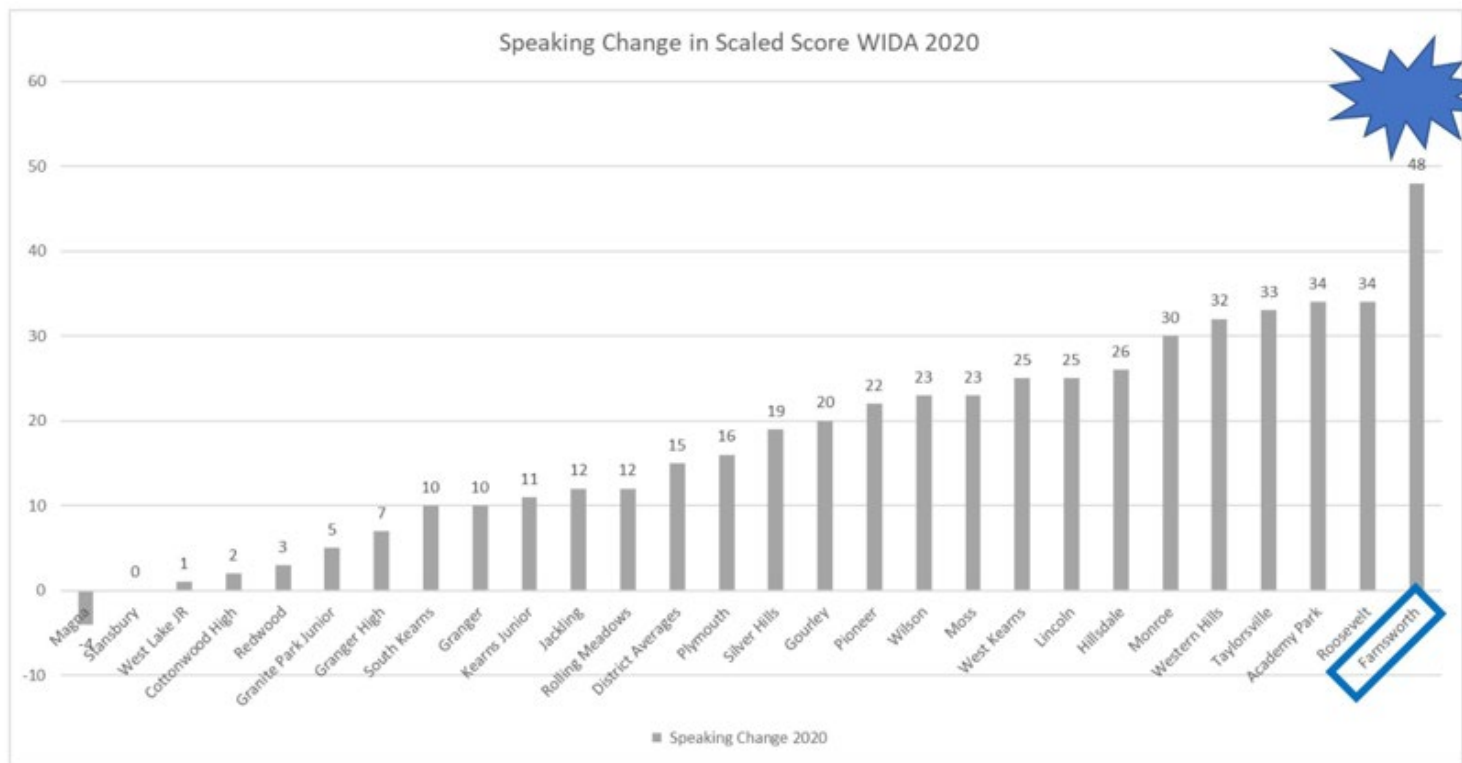
## March

- **Schools' percent of total accountability points for SPED students**
- How we support Special Education students, especially in TSI schools
- Continual Improvement Planning
- Addressing early learning loss (pandemic)

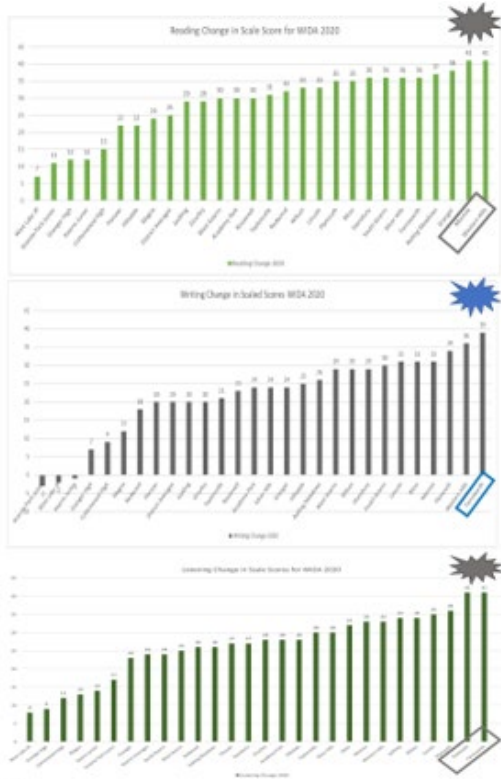
- Reminders of allowable Title I spending
- Summary of new research *How Principals Influence Schools* (Feb 2021)
- The characteristics of effective PLCs
- FY 22 school budgeting reminders
- Set up FY 22 budget planning meetings.



# Highlighting Schools' Change in WIDA scaled scores

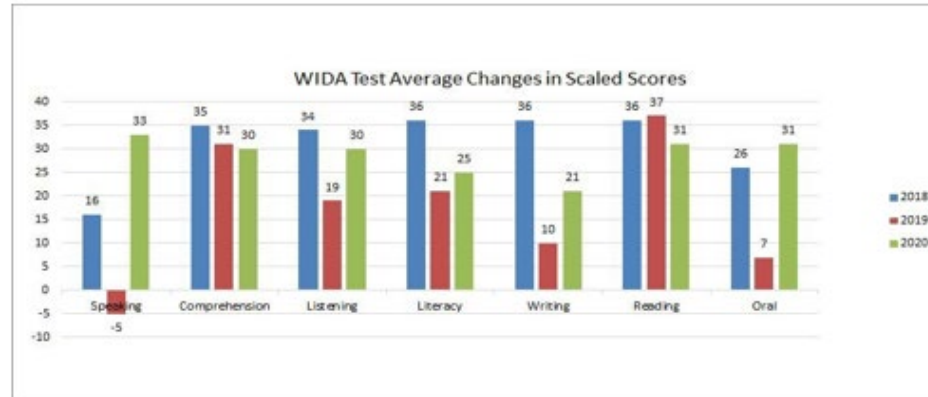


# Highlighting Schools' Change in WIDA scaled scores

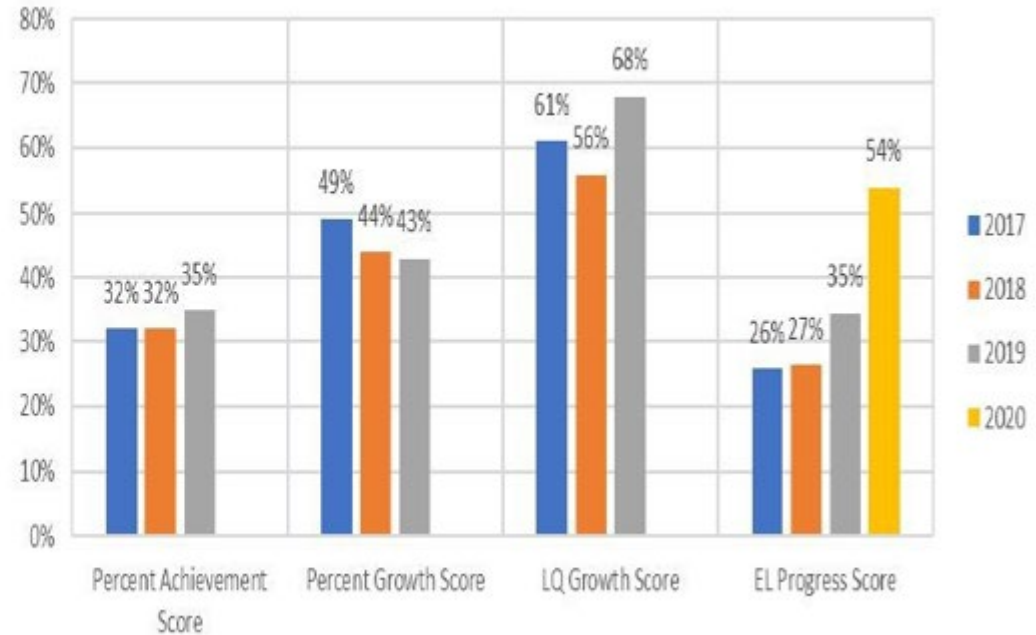
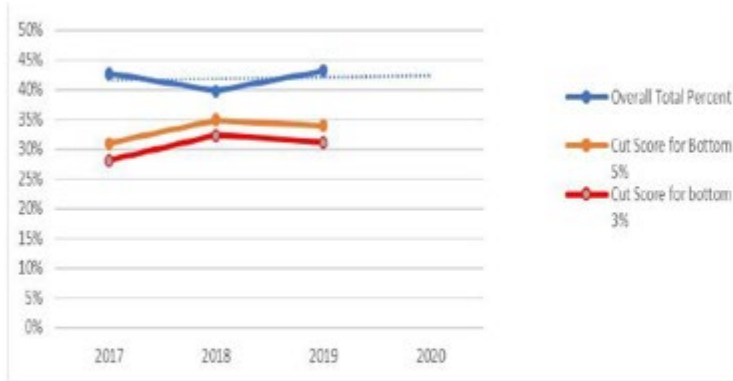


## How to generate these data and create a visualization:

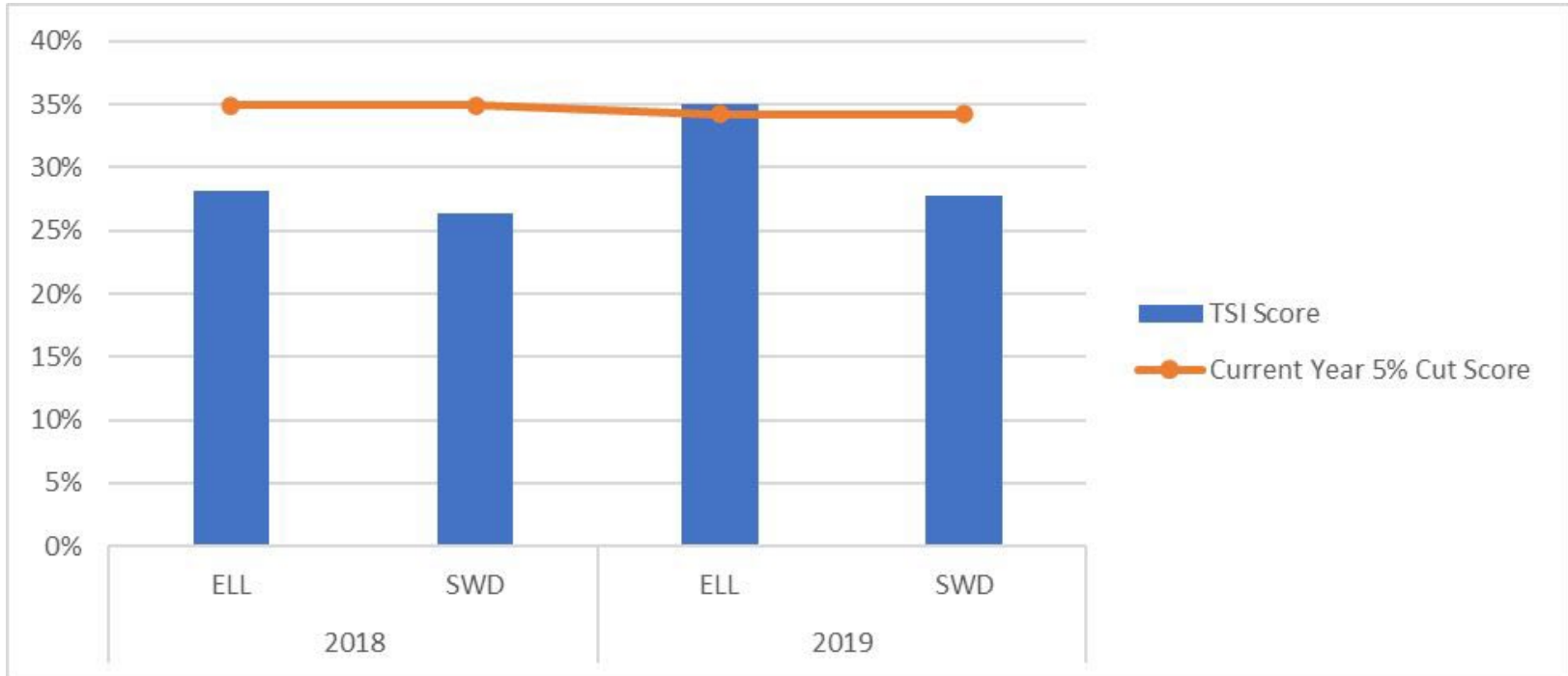
- Change in scale scores on the WIDA were calculated by student and component across multiple years.
- These changes were aggregated as an average to be able to highlight school level trends, strengths and areas for growth.
- Each component area was displayed across all Title 1 schools to be able to compare with similar schools



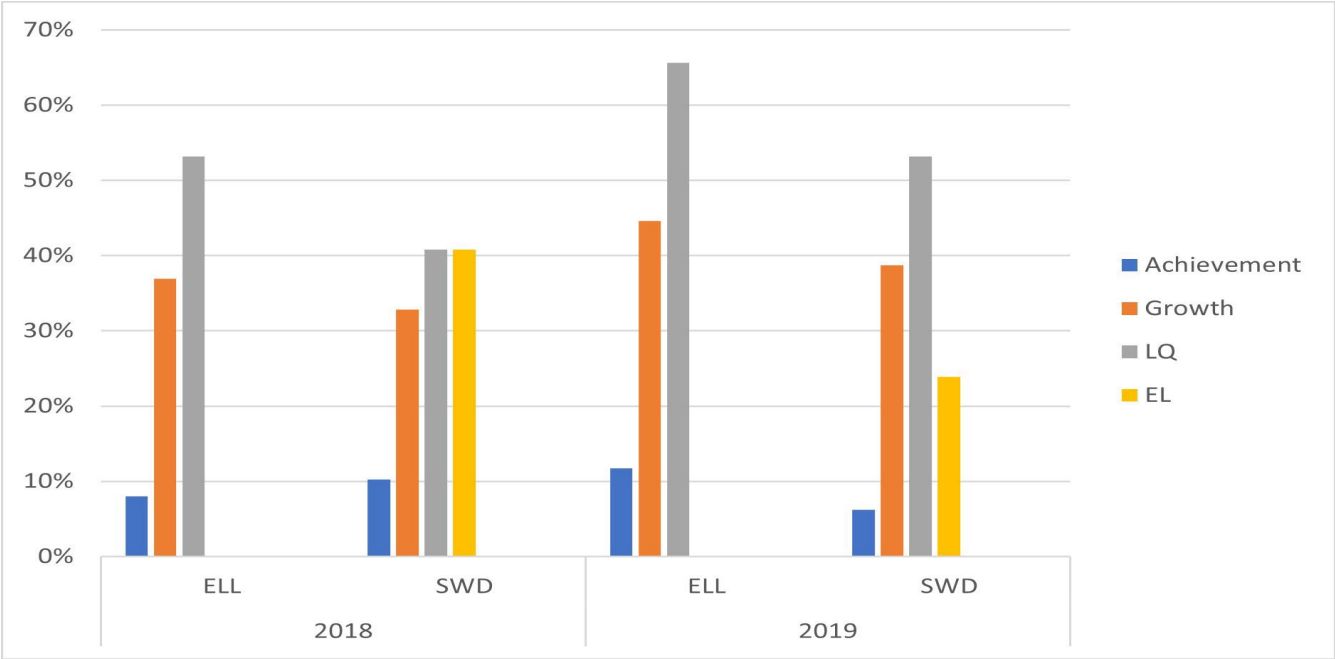
# Displaying Performance on School Accountability as a Trend with Cut Scores and Individual Elements of Accountability as a Percent of Total Possible Points in Each Indicator Area



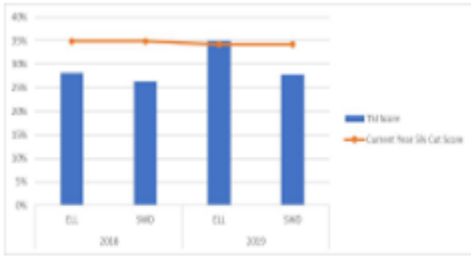
# Displaying TSI subgroup overall performance compared to the Bottom 5% cut score



# Displaying Performance by Student Subgroup in Each Indicator as a Percent of Total Possible Points in Each Indicator Area

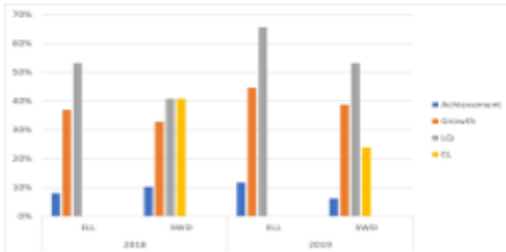


# Displaying TSI subgroup overall performance compared to the Bottom 5% cut score of TSI Designation Year and Indicator Areas



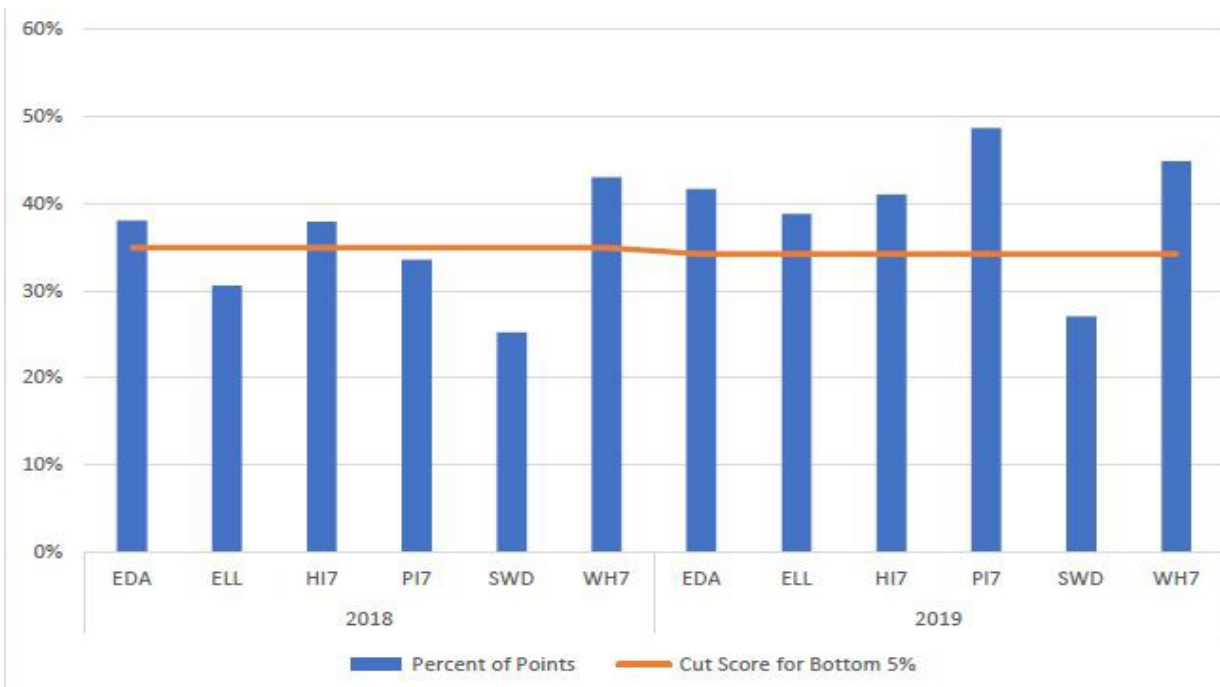
## How to generate these data and create a visualization:

- The TSI Ranked Lists for 2017-18 and 2018-19 are available on the [USBE website](#)



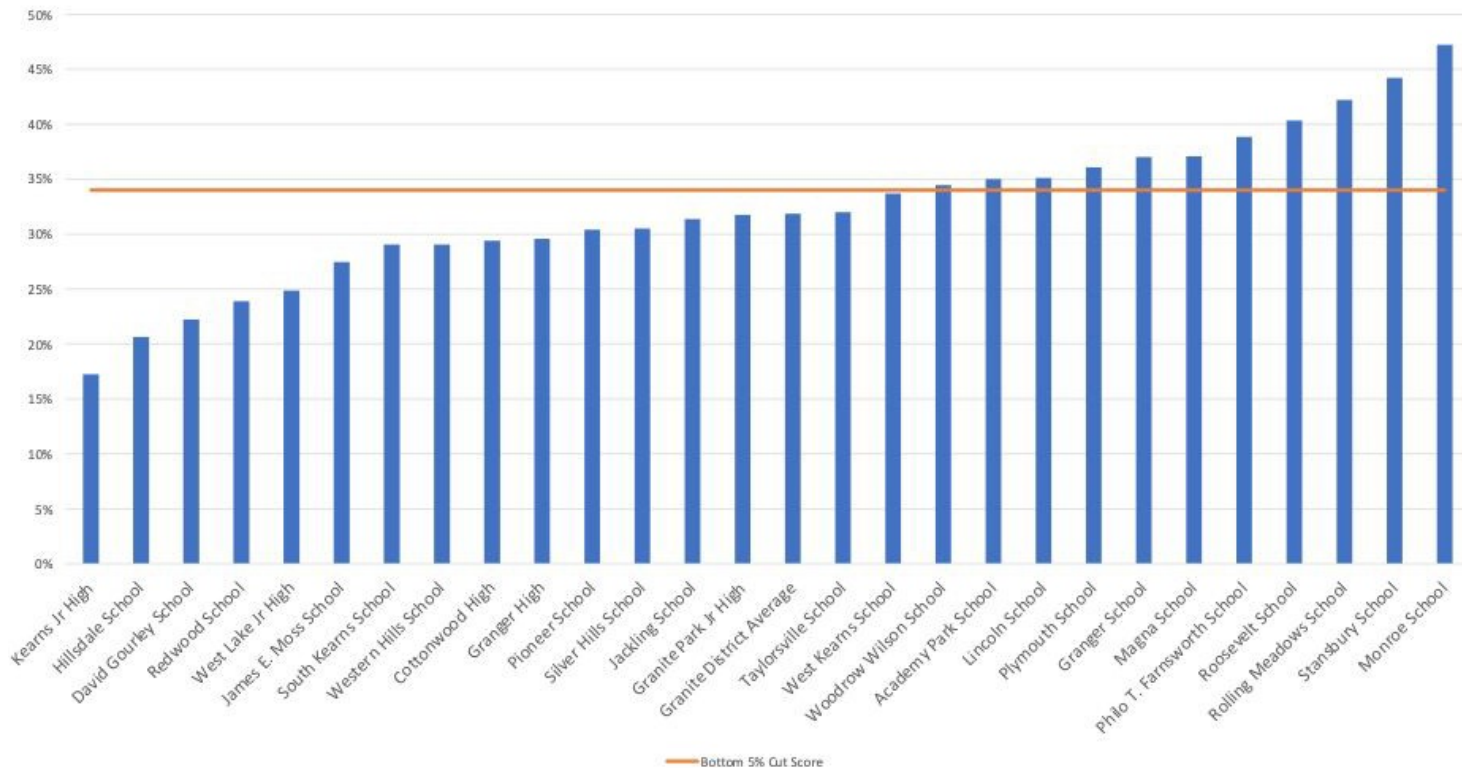
- This ranked list also includes the points for each indicator area which was turned into a percent of the available points for the area

So, how are my other subgroups doing relative to the 5% cut score?



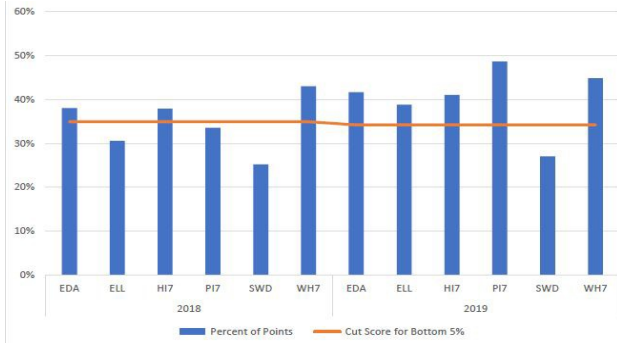
# Schools' Percent of Total Accountability Points for Student Groups

## Percent of Total Accountability Points for ELLs in 2019 for Title 1 Schools

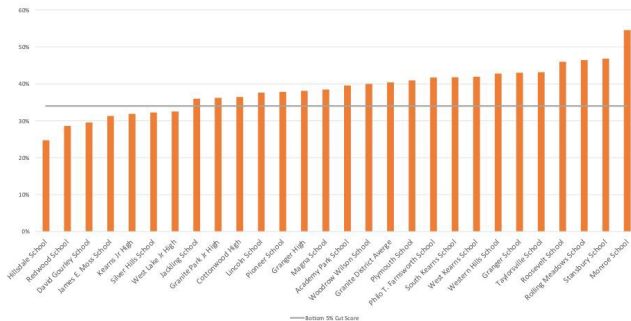




# Schools' Percent of Total Accountability Points for Student Groups



Percent of Total Accountability Points for EDAs in 2019 for Title 1 Schools



## How to generate these data and create a visualization:

- Request for the subgroup information from USBE and place cut scores in for each school year.
- Having this also allowed for a look at individual groups and how our Title One schools compared to each other when rank ordering a listing of Title 1 schools with the percent of points for each subgroup.
- More conversation generated around what successful schools were doing with different groups

# Identifying the Bottom 25% of Students

Spreadsheet is available to all principals for their schools and is updated on a regular basis with scores and other demographic data (if they are a distance or face to face learner for example)

Sorting functions allow for principals to be able to identify students that may fall in the bottom 25% at each grade level for different assessments.

This has also been used to sort for which students may not have taken an assessment, or filter to distance/face to face learners and see if there are differences

	A	B	C	D	E	F	G	H	I	J	K	L	M	N	O	P	Q	R	S	T
	First Name	Last Name	GSD Student ID	State Student ID	Teacher	Gender	Race/Ethnicity	Primary Language	2021 SPED Status	2021 ESL Status	Distance Learning	Most Recent VIDA Level	Most Recent VIDA D	Acadience Composite 2021 BEG	Acadience Benchmark Level 2021 BEG	Acadience Composite 2021 MID	Acadience Benchmark Level 2021 MID	DIBELS Composite 2020 BEG	DIBELS	
1																				
2						M	Hispanic/Spanish	ENGLISH	N	N	Distance Learning			367	Above Benchmark	453	Above Benchmark	318	Abc	
3						F	Asian	VIETNAMESE	N	Y	Face to Face	5	3/2018	439	Above Benchmark	482	Above Benchmark	431	Abc	
4						M	Hispanic/Spanish	SPANISH	N	Y	Distance Learning	4	3/2020	333	At Benchmark	380	At Benchmark	324	Abc	
5						F	Hispanic/Spanish	SPANISH	N	Y	Distance Learning	4	3/2020	426	Above Benchmark	460	Above Benchmark	361	Abc	
6						F	Caucasian/White	ENGLISH	N	N	Face to Face			239	Well Below Benchmark	197	Well Below Benchmark	197	Well B	
7						F	Hispanic/Spanish	SPANISH	N	Y	Face to Face	2	3/2020	69	Well Below Benchmark	158	Well Below Benchmark	20	Well B	
8						M	Caucasian/White	ENGLISH	Y	N	Face to Face			417	Above Benchmark	421	Above Benchmark	342	Abc	
9						F	Hispanic/Spanish	SPANISH	N	Y	Face to Face	3	3/2020			177	Well Below Benchmark	41	Well B	

# Identifying the Bottom 25% of Students considering MOY on Acadience and the Pathway of Progress

This data sheet looked at the bottom 25% on the MOY Acadience based on the composite score as well as pulling in the Pathway of Progress.

- This was helpful to identify bottom 25% on this measure, but also see the Pathway of Progress (POP) to determine those students that may not be making progress at this time.

School Name	Student Last Name	Student First Name	Grade	Official Teacher Name	Benchmark Period	Pathway Achieved	Assessment Measure	Assessment
			K		MOY	Well Below	Well Below	0
			K		MOY	Well Below	Well Below	0
			K		MOY	Well Below	Well Below	15
			K		MOY	Well Below	Well Below	15
			K		MOY	Well Below	Well Below	15
			K		MOY	Well Below	Well Below	16
			K		MOY	Well Below	Well Below	16
			K		MOY	Well Below	Well Below	16
			K		MOY	Well Below	Well Below	24
			K		MOY	Well Below	Well Below	25
			K		MOY	Well Below	Well Below	27
			K		MOY	Well Below	Well Below	30
			1		MOY	Well Below	Well Below	4
			1		MOY	Well Below	Well Below	7
			1		MOY	Well Below	Well Below	7
			1		MOY	Well Below	Well Below	8
			1		MOY	Below	Well Below	14
			1		MOY	Below	Well Below	14
			1		MOY	Below	Well Below	18
			1		MOY	Well Below	Well Below	20
			1		MOY	Below	Well Below	22
			1		MOY	Below	Well Below	23
			1		MOY	Typical	Well Below	25
			1		MOY	Well Below	Well Below	29
			1		MOY	Below	Well Below	30
			1		MOY	Typical	Well Below	30
			1		MOY	Well Below	Well Below	30
			1		MOY	Below	Well Below	32
			1		MOY	Below	Well Below	35
			2		MOY	Well Below	Well Below	0
			2		MOY	Well Below	Well Below	2

## Video Resources

[Video: How are elementary and junior high school grades calculated?](#)

[Video: How are high school grades calculated?](#)

## Contact Information

Dr. Joan Bramble 385-646-4158 [jbramble@graniteschools.org](mailto:jbramble@graniteschools.org)

Dr. Aaron Wilson 385-646-7401 [awilson@graniteschools.org](mailto:awilson@graniteschools.org)