

Coalition for Community Schools

STATE COALITION STAGES OF DEVELOPMENT

EXPLORING ([click to read more](#))

There is talk of developing a coalition, but only informal communications or plans have been made. Someone convenes a group of people to move the plans forward.

EMERGING ([click to read more](#))

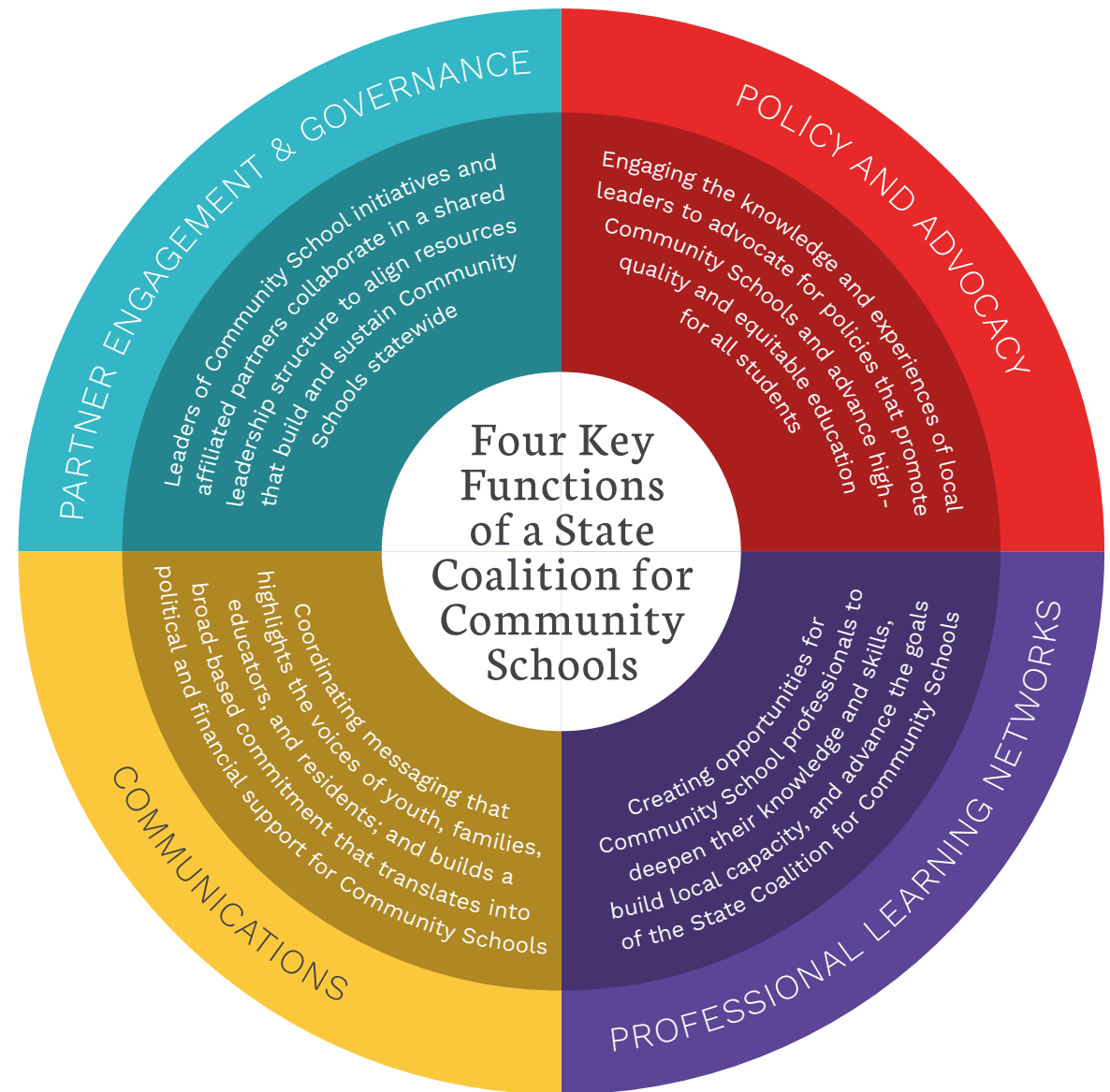
Commitment to developing a coalition by actively convening partners and putting in place a governance structure with initial goals and benchmarks outlined.

EVOLVING ([click to read more](#))

There is an official coalition in place, a wide range of partners are involved, regular communications to local practitioners, and a leadership team and professional learning convenings occurring.

EXPANDING ([click to read more](#))

The coalition has added key committees, is regularly tracking impact and stories, and is widening sphere of influence through new partnerships, expanded public communications, and ongoing capacity building.



- An informal leadership team meets
- Key partners identified (including SEAs, LEAs, CBOs, cross-system agencies, state intermediaries, families, educators, and youth)
- Initial meetings have been calendered

- Initial leadership team in place with elected co-chairs
- Key partnerships have been established
- Resources needed to host meetings have been identified

① EXPLORING

Partner Engagement & Governance



EMERGING ②

③ EVOLVING

EXPANDING ④

[Click to learn more](#)

- Governance structure confirmed with official leadership team in place
- Intermediary entity has been identified to support coalition efforts
- The structure adheres to all necessary legal and financial guidelines and requirements
- Co-chairs/leads are selected by the state partners and participate in the Coalition for Community School's State Coalition Network
- Co-chairs are participating regularly in meetings and activities within the state and nationally
- Continued review of key partnerships, participation, engagement, and individual partner needs

- State Coalition is recognized by the state as collective body to make recommendations
- The governance structure includes policy, communications, state Research Practice Network, and youth advisory committees
- Partners are leading and contributing on committees
- Potential and current funders are identified and engaged on a regular basis to support sustainability of State Coalition and partner activities
- Funding secured for full time State Coalition coordinator position and general operations

- State policy opportunities discussed
- Informal inquiries of elected official interests in process

- Clear goals set for policy and funding
- Organized education of elected officials is occurring

① EXPLORING

Policy & Advocacy



EMERGING ②

③ EVOLVING

[Click to learn more](#)

EXPANDING ④

- Consensus on state policy agenda, informed by various local and state partners, is established among partners and local communities
- Key outcome measures and goals are identified
- Annual organized grassroots advocacy strategy is in action (click links for more info: [link1](#) | [link2](#) | [link3](#) | [link4](#))
- Elected official champions are identified

- State policy and advocacy agenda is aligned with the Coalition for Community School's national policy and advocacy agenda
- Beneficiary presence is evident in local and state advocacy
- State Coalition prepares and advocates for policies that promote Community Schools and advance equity
- Local and state elected officials are supporting community schools

- The Coalition for Community Schools is notified; state receives communications guide
- A listserv of potential partners is created

- Local community school messaging is aligned
- Local and state messaging is aligned
- Outward communications with Coalition for Community Schools and state co-branding is communicated outward
- Website launched
- Social media handle created
- Additional tools such as newsletters and virtual collaboration groups or listservs are used for frequent communication

① EXPLORING

Communications



EMERGING ②

③ EVOLVING

[Click to learn more](#)

EXPANDING ④

- Agreed upon communications plan is adopted and is aligned with national Coalition for Community Schools
- Two-way communications among listserv members is happening regularly
- Content sharing across the state is in place

- Key partners are incorporating community schools in communications
- Stories of community schools regularly appear in media
- Results and outcomes of the State Coalition are shared widely within the state, local partners, and the Coalition for Community Schools

- Local community school lead partners conduct internal training
- Community school leaders participate in Coalition for Community School's convenings, network activities, and webinars.

- State standards are developed; state standards are aligned with national standards
- State Coalition lead partners organize capacity-building with lead partners at both the state and local levels to align with site standards
- State Coalition leaders participate in relevant Coalition for Community Schools networks and activities

① EXPLORING

Professional Learning Networks

[Click to learn more](#)



EMERGING ②

③ EVOLVING

EXPANDING ④

- Statewide capacity building system is in place
- Common impact measures are in place
- Data (quantitative and stories) collection systems are in place to identify, analyze, illuminate, and inform State Coalition efforts
- Participating partners share expertise in organized trainings, events, and/or meetings on specific areas of interest for improvement
- An annual learning exchange is conducted for networking and knowledge sharing in continuous improvement and deepening relationships
- Shared tools are developed for state specific implementation guidance

- Data is used to inform State Coalition's activities and communications
- State Coalition is working in regional clusters with others for knowledge sharing, sustainability, and scaling practices
- A funders network is established to support sustainability of State Coalition and partner activities