

Indicator 8: Parent Engagement Survey:

Susie Estrada
Family and Community Engagement Specialist
susie.estrada@schools.utah.gov



What is the Indicator 8 Survey?

- Indicator 8 is one of the Annual Performance Report (APR) indicators that the USBE submits to the Office of Special Education Programs (OSEP).
- Indicator 8 is the “percent of parents with a child receiving special education services who report that schools facilitated parent involvement as a means of improving services and results for children with disabilities.” 20 U.S.C. 1416(a)(3)(A).



How Do We Administer the Indicator 8 Survey?

- Spring: LEA's role and the USBE's role
- Electronic Survey (email with a link to the Qualtrics survey)
- Paper Survey
- Phone Calls
- The survey cycle alternates every other year *except* for the four largest districts in Utah: Granite School District, Alpine School District, Davis School District, and Jordan School District

How Do We Administer the Indicator 8 Survey (continued)?

- For each LEA, a stratified, representative group of parents is selected to receive the parent survey. The number of parents chosen is dependent on the number of students with disabilities at the LEA as indicated in the table below. The sample sizes selected ensure roughly similar margins of error across the different district sizes.

Number of Students w/Disabilities	Sample Size
1-100	All
101-999	100
1,000-4,999	200
5,000-10,000	300



Why Do We Administer the Indicator 8 Survey?

- Not Punitive
- Pause for reflection
 - Parent Comments
 - No response is still a response
- Inform our practices so that we can engage families intentionally



How to Use Your Indicator 8 Survey Report

- UPIPS
- Score Range of 1-5: Data from 2018 was determined to be an appropriate baseline. With a baseline of 78.38%, targets will gradually increase with consideration for COVID-19 impacts
- Sample of a Report
- Parent Comments

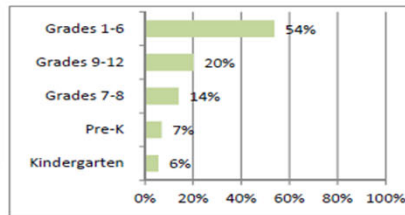
Parent Survey

Utah Part B Parent Survey 2015-16 Statewide

Number of Parents Who Received the Parent Survey: 6,755
 Number of Parents Who Completed the Parent Survey: 1,573
 Percentage of Parents Who Completed the Parent Survey: 23.3%

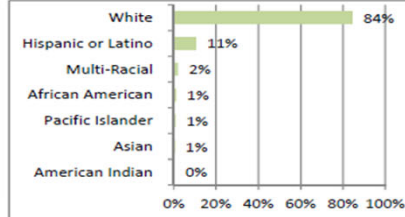
Display 1: Parent Respondents Who Had a Child at This Level at Time of Survey

	Number	Percent
Pre-K	108	7%
Kindergarten	87	6%
Grades 1-6	844	54%
Grades 7-8	218	14%
Grades 9-12	316	20%



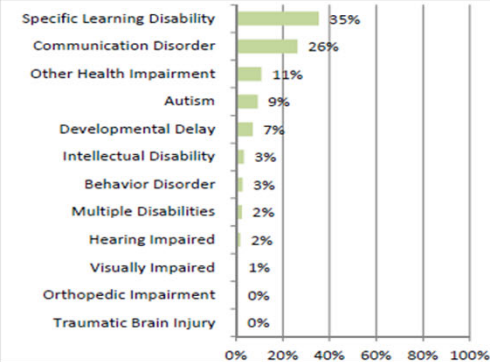
Display 2: Parent Respondents Who Had a Child of This Race/Ethnicity

	Number	Percent
African American	18	1%
American Indian	6	0%
Asian	9	1%
Hispanic or Latino	166	11%
Multi-Racial	32	2%
Pacific Islander	13	1%
White	1329	84%



Display 3: Parent Respondents Who Had a Child With This Primary Disability

	Number	Percent
Autism	143	9%
Behavior Disorder	43	3%
Communication Disorder	412	26%
Developmental Delay	111	7%
Hearing Impaired	28	2%
Intellectual Disability	52	3%
Multiple Disabilities	38	2%
Other Health Impairment	170	11%
Orthopedic Impairment	6	0%
Specific Learning Disability	556	35%
Traumatic Brain Injury	5	0%
Visually Impaired	9	1%



Parent Survey Response

2015-16
Statewide

Number of Parents Who Completed the Parent Survey:

1,573

Display 6: Individual Item Results

Indicate the level of agreement with each question.	# Answered	% Answered	% N/A	Strongly Disagree	Disagree	Agree	Strongly Agree	Agree, Strongly Agree
1. I work in partnership with the IEP team to develop my child's IEP.	1565	99.5%	1.2%	0.9%	4.0%	45.1%	50.0%	95.1%
2. I feel comfortable sharing my ideas about how well special education services meet my child's needs.	1568	99.7%	1.2%	1.4%	5.7%	43.6%	49.3%	92.9%
3. The teacher(s) keep(s) in touch with me regularly about my child's progress.	1564	99.4%	0.4%	6.3%	12.1%	42.6%	39.0%	81.6%
4. My relationship with the staff has a positive effect on my child's education.	1566	99.6%	2.4%	1.6%	3.8%	43.3%	51.3%	94.6%
5. Administrators are available to discuss my questions or concerns.	1567	99.6%	2.0%	2.6%	5.6%	46.5%	45.3%	91.7%
6. My child's school helps me play an active role in my child's education.	1568	99.7%	1.3%	2.5%	7.7%	45.6%	44.2%	89.9%
7. My child's school encourages my involvement to improve outcomes for my child.	1568	99.7%	1.3%	1.7%	8.4%	45.8%	44.0%	89.9%
8. The school explains the options I have if I disagree with the special education process.	1570	99.8%	8.6%	2.5%	10.7%	45.1%	41.7%	86.8%
9. The parents' rights (procedural safeguards) were explained to me so that I understood them.	1568	99.7%	1.9%	1.0%	4.2%	43.1%	51.8%	94.9%
10. The IEP team communicates with me in my native language.	1567	99.6%	7.8%	1.0%	1.0%	27.7%	70.3%	98.0%
11. At the IEP meeting, we discussed what classroom accommodations my child would receive.	1566	99.6%	6.2%	0.9%	4.7%	39.1%	55.2%	94.4%
12. At the IEP meeting, we discussed how my child would participate in state and district testing.	1557	99.0%	9.8%	3.5%	14.2%	39.8%	42.5%	82.3%

Utah Part B Parent Survey -- 2015-16

Parent Survey Data and Summary

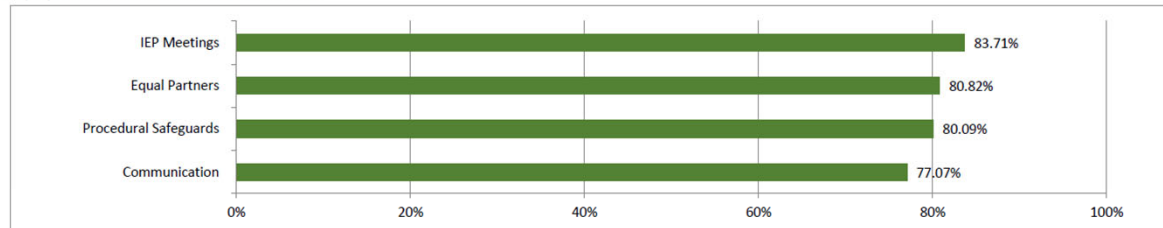
Number of Parents Who Completed the Parent Survey:

Display 4: Parent Involvement Percentage

Percentage of parent respondents who report that the school facilitated their involvement:

	Target Percentage for 2020-21	Weighted # of Parents who Received a Score	Weighted # of Parents who Met Indicator	% who Met Indicator	Did the State Meet the Target?
Overall Parent Involvement	80.00%	2,283.00	1,885.50	82.59%	YES

Display 5: Chart of Mean Scores for Each Scale



Explanation of the Overall and Scale Percentages

The scores are based on a "percent of max" score. A percent of max score indicates the percentage of points the parent "awarded" to the school on certain items.

For example, a parent who rated the school a "4" (Strongly Agree) on each of the selected items, would receive a 100% score. This parent awarded the school the highest number of possible points. A parent who rated the school a "1" (Strongly Disagree) on each of the selected items would receive a 0% score. This parent rated the school the lowest number of points possible. A parent who rated the school a "3" (Agree) on each of the selected items would receive a 67% score. This parent awarded the school 67% of the total possible points. A parent who rated the school a "2" (Disagree) on each of the selected items would receive a 33% score.

Please note that there is more than one way of arriving at a particular score. For example, to get a 67% score, a parent might have circled response "3" (Agree) on each of the selected items. Or a parent could have rated the school a "4" (Strongly Agree) on half the items and a "2" (Disagree) on half the items – this also would result in a 67% score.

To determine the state's Overall Parental Involvement Percentage, the percentage of parents who had a percent of max score of 67% or above AND who did not have any "Strongly Disagree" ratings was calculated. This is based on all 12 items.

Interpretation example of a scale score: If the mean score for Equal Partners is 65%, that means that on average, 65% of parents responded "Yes" to the four Equal Partners questions.

Scales for the mean scores: Procedural Safeguards (Q8, Q9); Equal Partners (Q2, Q4, Q6, Q7); IEP Meetings (Q1, Q10, Q11, Q12); Communication (Q3, Q5).

Parent Survey Data Over Time

Display 8: Response Rates

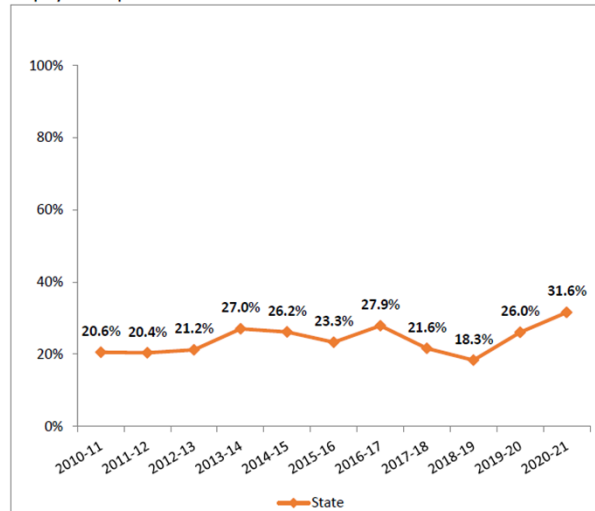
	2010-11	2011-12	2012-13	2013-14	2014-15	2015-16	2016-17	2017-18	2018-19	2019-20	2020-21
Number Sampled	3,162	3,760	4,280	4,271	6,483	6,755	6,823	6,961	7,449	7,202	7,230
Completed Surveys	650	767	908	1,155	1,697	1,573	1,904	1,504	1,365	1,876	2,283
State Response Rate	20.56%	20.40%	21.21%	27.04%	26.18%	23.29%	27.91%	21.61%	18.32%	26.05%	31.58%

Display 9: Parent Involvement Percentage - Percent of parent respondents who report that the school facilitated their involvement.

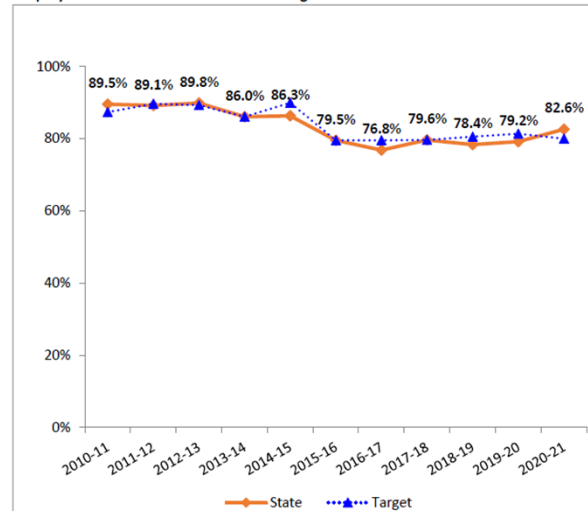
Overall Parental Involvement	2010-11	2011-12	2012-13	2013-14	2014-15	2015-16	2016-17	2017-18	2018-19	2019-20	2020-21	2020-21 Minus 2019-20
State	89.54%	89.14%	89.83%	86.04%	86.31%	79.52%	76.82%	79.63%	78.35%	79.15%	82.59%	3.44%
Target	87.33%	89.63%	89.27%	86.04%	89.92%	79.52%	79.52%	79.62%	80.52%	81.33%	80.00%	-1.33%

Note: Survey changed significantly in 2015-16.

Display 10: Response Rate - Over Time

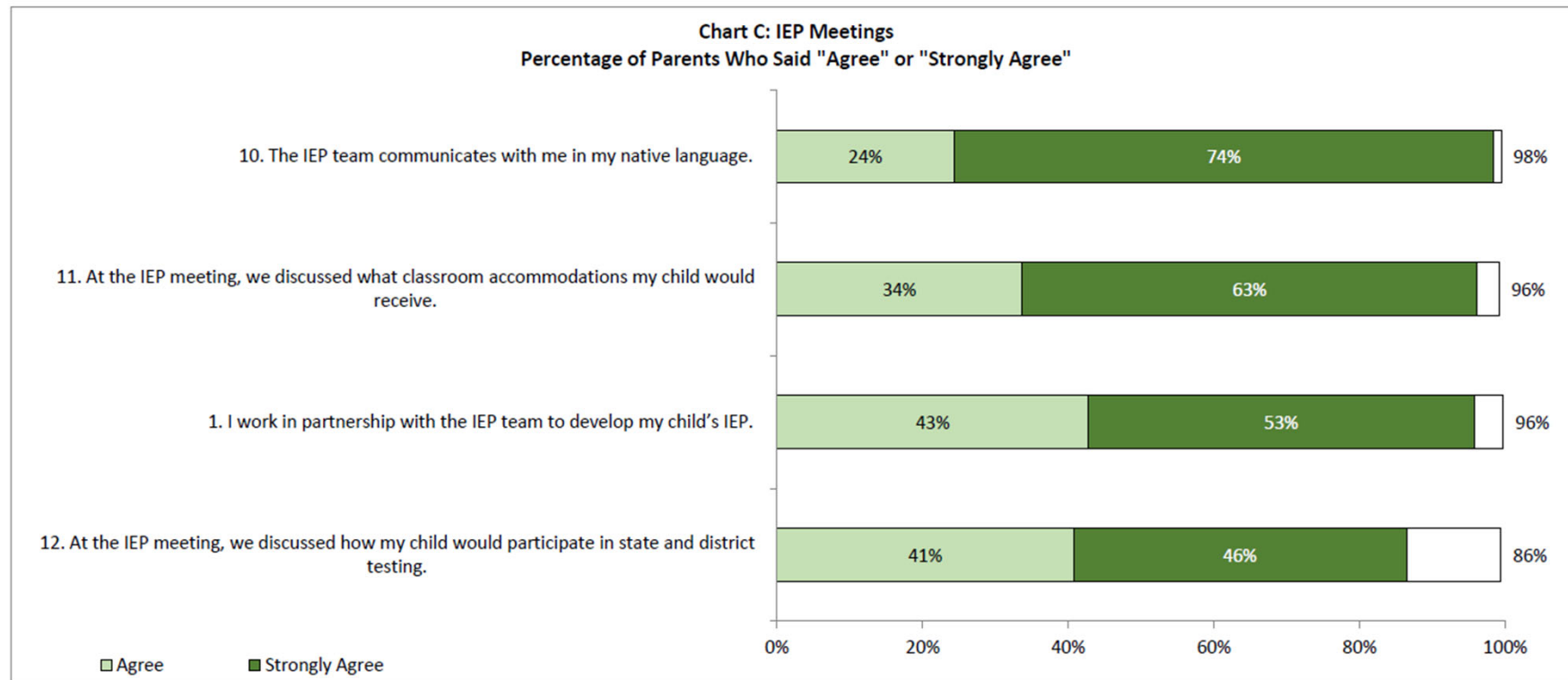


Display 11: Parent Involvement Percentage - Over Time



Parent Survey IEP Data

Display 7: Item Results, Grouped by Item Scales



The USBE's next steps to support LEA's

- Awareness Toolkit
- Indicator 8 Hotline
- Question Revision
- Texted Survey Link

YOU ARE NEEDED TO COMPLETE UTAH'S INDICATOR 8 SURVEY!

This survey helps us know how well your school is doing at:

- Including you in the special education your child receives
- Explaining the process and updates relevant to your child

This survey helps us at the state level know what we need to do to better support your school so that they can offer high-quality special education services!

WHO CAN COMPLETE THIS SURVEY?

- Parents
- Guardians
- Foster Parent
- A person acting in place of a parent (grandparent, aunt, or other relative).
- A person with legal authority to make educational decisions for the student.

This survey is sent through email or mailed to your house. While this survey is anonymous, if you do not want to complete it yourself you can call us and do it over the phone. You can also call us to ask any questions or share concerns!



801- 538- 7870





Keep in Touch!

- ❖ susie.estrada@schools.utah.gov
- ❖ 385-295-7891