



September 2023

1 New School LAND Trust Website Users

If you are new to the program, please watch the Trust System Overview [video](#).

If you are still in need of a School LAND Trust Website account, please watch [this video](#) for directions.



2 School Community Council Rules of Order and Procedure

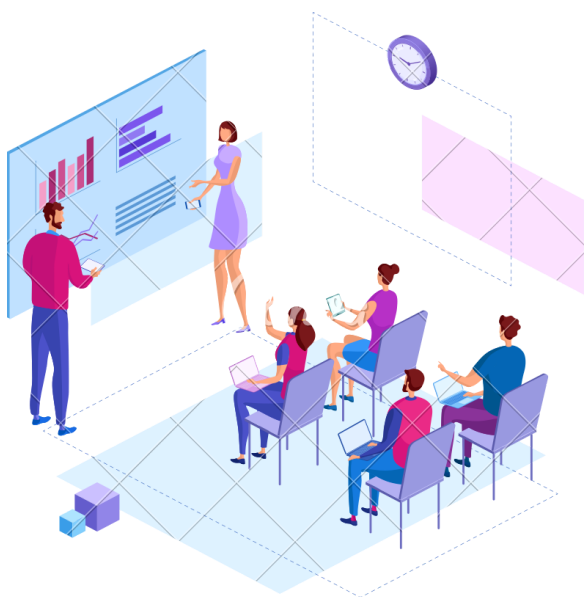
Remember to review and adopt your school's Rules of Order and Procedure, please refer to this [video](#) for information.

Templates are available on the USBE [School LAND Trust Website](#).



3 Community Council Website Postings

To review the requirements for website posting, please refer to this [video](#) or the [timelines](#) on the USBE School LAND Trust website.



4 Trainings

- School Community Council Introduction [Videos](#)
- "[How To](#)" Complete Council Membership and Principal's Assurance
- Plan amendments informational [video](#) and "How To" upload an amendment [video](#)

5 Reminders

By October 20th- Update the Council Membership and Principal's Assurance on the [School LAND Trust Website](#) and update each school's website.

Watch this [video](#) for a step-by-step "How To" upload Council Membership and Principal's Assurance.

